



# Voice Pager

MODEL : VP200



# PAGER PROGRAMMING GUIDE

# Contents

<b>GETTING STARTED .....</b>	<b>1</b>
EQUIPMENT REQUIRED.....	1
PROGRAMMING INTERFACE.....	1
<b>INSTALLING PROGRAMMER SOFTWARE.....</b>	<b>2</b>
INSTALLATION .....	2
RUNNING.....	7
<b>CONNECTING PROGRAMMER TO VP200 .....</b>	<b>8</b>
<b>VP200 PROGRAMMING .....</b>	<b>9</b>
INTRODUCTION.....	9
STARTING THE PROGRAMMER .....	10
MAIN MENU .....	11
<i>Menu bar</i> .....	11
<i>Serial Setting</i> .....	12
<i>Channel Space Setting</i> .....	12
<i>Tone System</i> .....	12
<i>Channel</i> .....	13
<i>Setting</i> .....	16

## Getting Started

The VP200 Pager Programming Software, provides the flexibility to program VP200 pagers to meet individual requirements. To obtain the best results from the product, please take a few minutes to read this instruction guide.

## Equipment Required

To install and operate the programmer, you need a system that meets the following minimum requirements:

- An personal computer (PC), or compatible
- Windows SE or above operating system (XP Recommended)
- 128 MB of RAM
- A USB output port

## Programming Interface

The Programming interface kit, shown in following Figure, supports VP200 programming. Items included with the interface kit consist of the following:

- VP200 Programming software
- VP200 Programmer
- USB Cable - Type A to B



**VP200 Programmer**



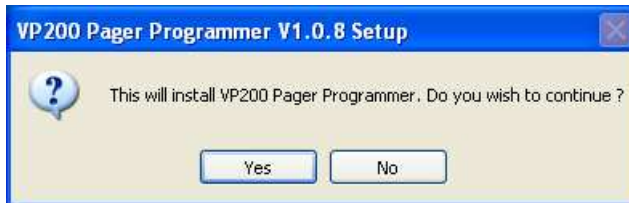
**USB Cable - Type  
A to B**

# Installing Programmer Software

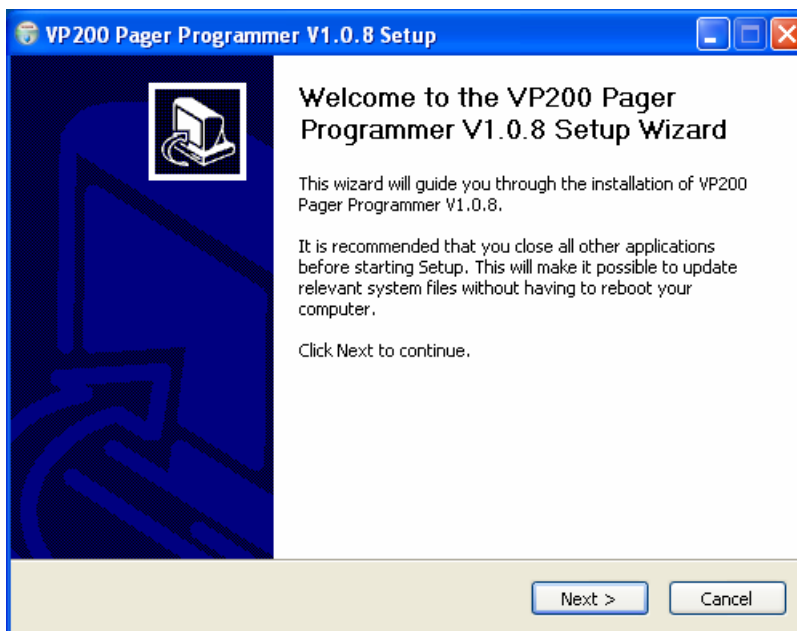
## Installation

Install the programmer software into a PC as follows:

1. Uncompress the VP200\_Setup.zip and save them in a temporary directory.
2. Double click the setup.exe file. Click on "Y".

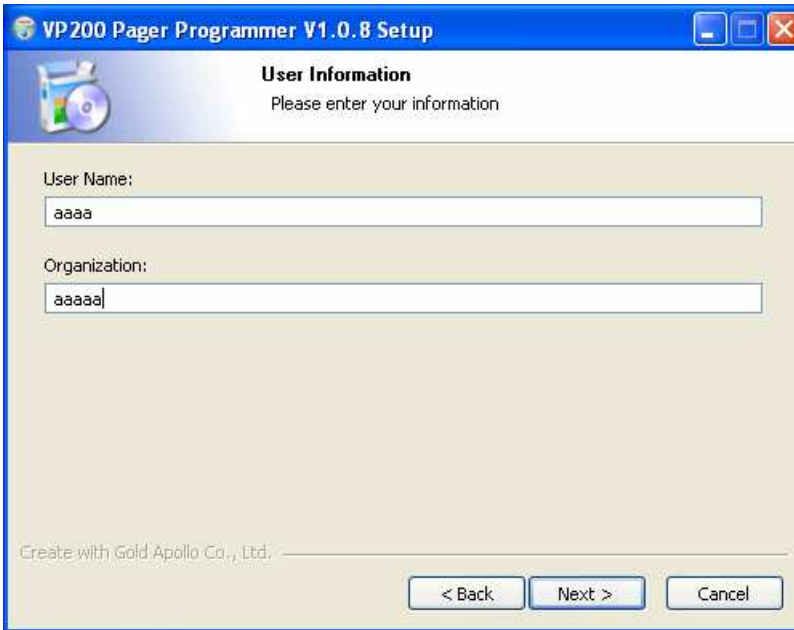


3. Click "Next" on the Welcome screen.



## Installing Programmer Software

4. Enter your user information and click "Next". (Note: you must enter at least a single character "into the company field)



**VP200 Pager Programmer V1.0.8 Setup**

**User Information**  
Please enter your information

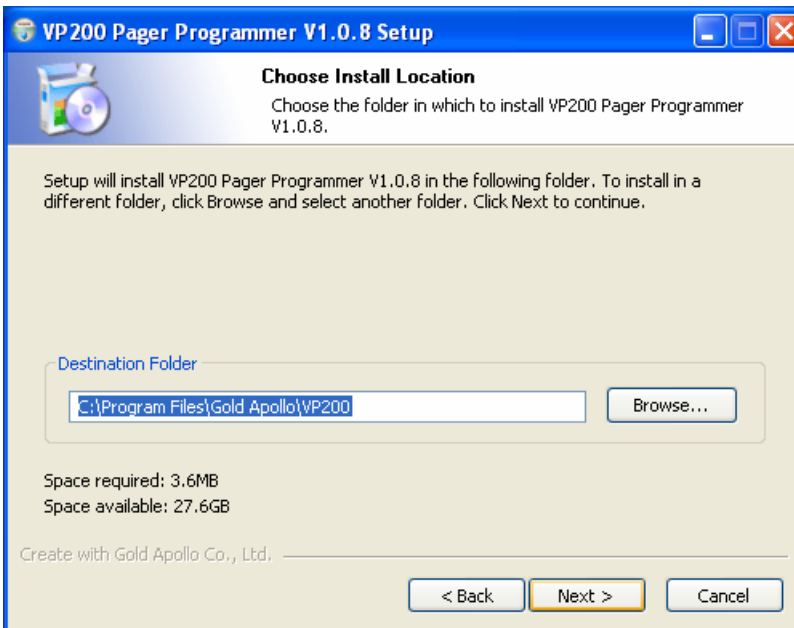
User Name:  
aaaa

Organization:  
aaaaa

Create with Gold Apollo Co., Ltd. \_\_\_\_\_

< Back   Next >   Cancel

5. Choose where the program should be installed and click "Next".



**VP200 Pager Programmer V1.0.8 Setup**

**Choose Install Location**  
Choose the folder in which to install VP200 Pager Programmer V1.0.8.

Setup will install VP200 Pager Programmer V1.0.8 in the following folder. To install in a different folder, click Browse and select another folder. Click Next to continue.

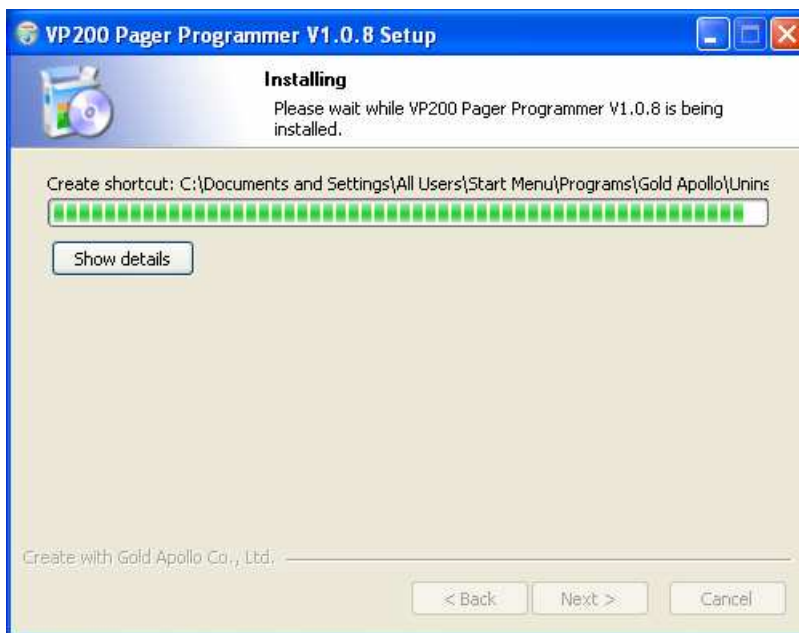
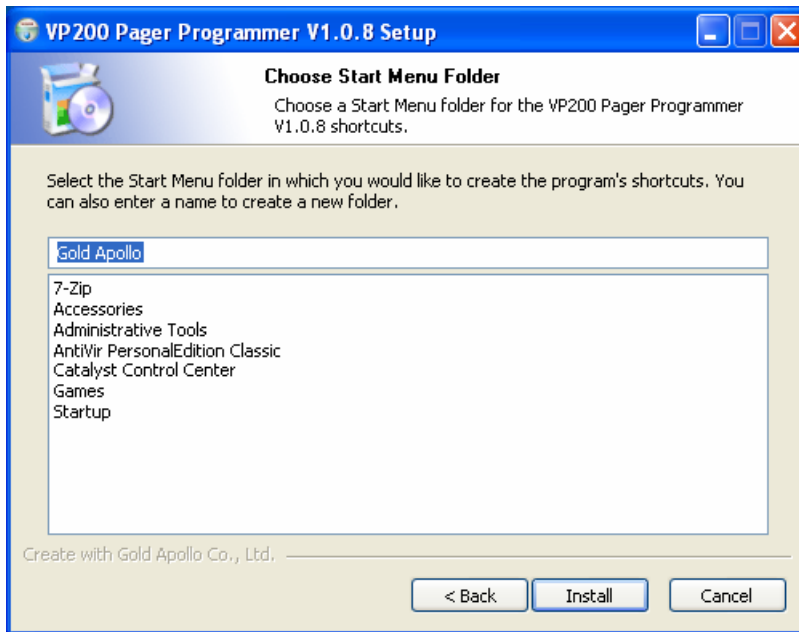
Destination Folder  
C:\Program Files\Gold Apollo\VP200   Browse...

Space required: 3.6MB  
Space available: 27.6GB

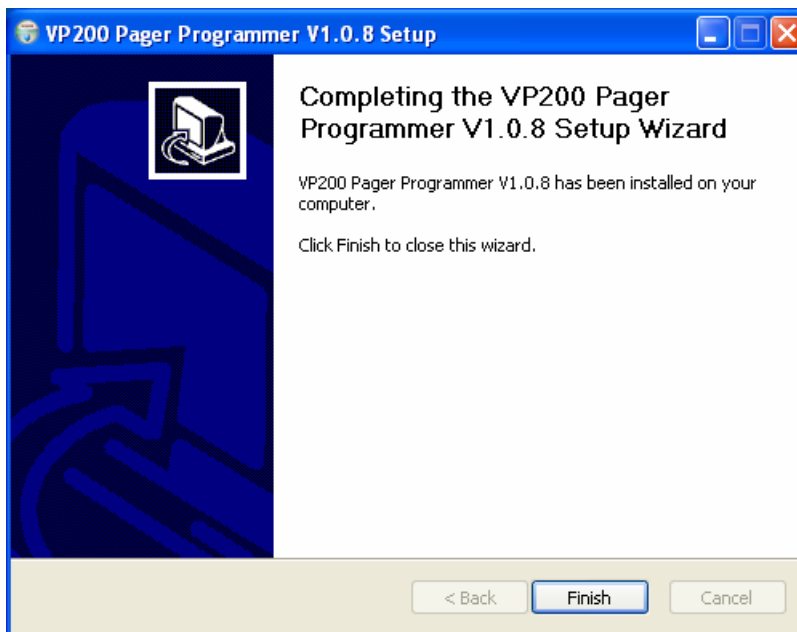
Create with Gold Apollo Co., Ltd. \_\_\_\_\_

< Back   Next >   Cancel

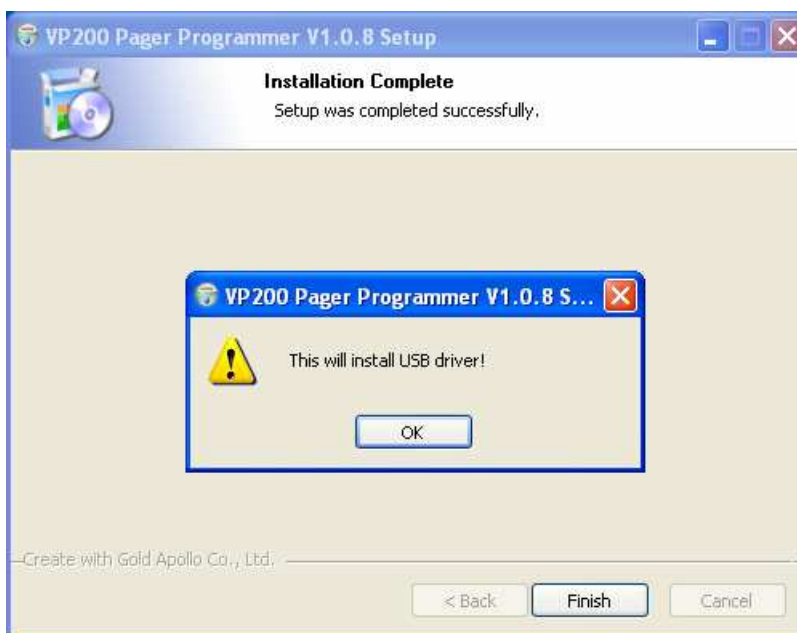
6. On the Select Program Folder screen choose where you would like the program to show up in your start menu and click "Install".

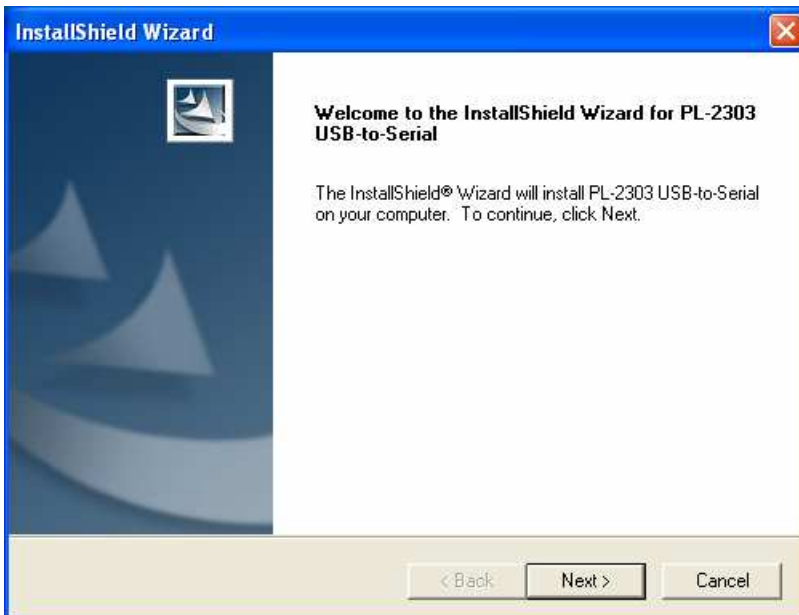
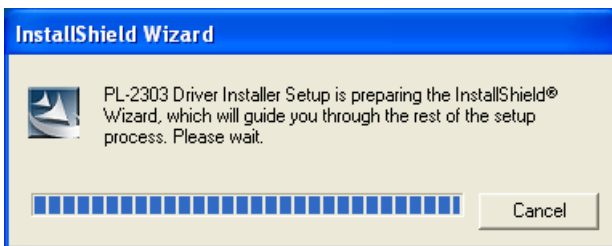
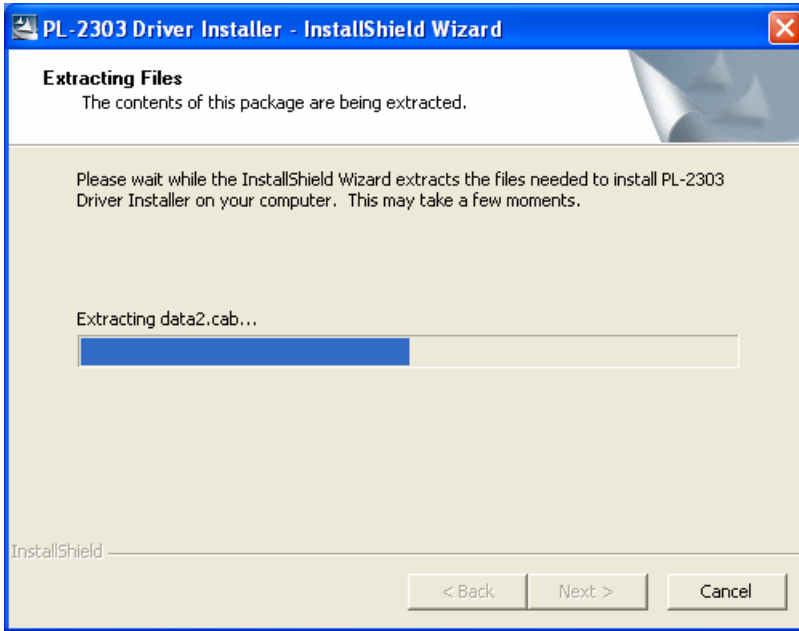


7. If you had installed USB driver then click “Finish” on the Setup Complete screen and VP200 Pager Programmer has been installed on your computer.



8. If you did not install USB driver then click “OK” to install USB driver.







9. Please reboot your computer after USB driver and programming software installed.



## Running

You now have the program installed. To run it from the Start menu/ Programs/ Gold Apollo /VP200 Pager Programmer.

---

## Connecting Programmer to VP200

Refer to Figure then connect the programmer kit as follows:

1. At the rear of the PC, connect the USB cable Type A Male to the USB port.
2. Plug the USB cable Type B Male into USB connector of the VP200 programmer.  
Hardware installation is complete.



*Figure Programmer Hardware Connections*

# VP200 Programming

## Introduction

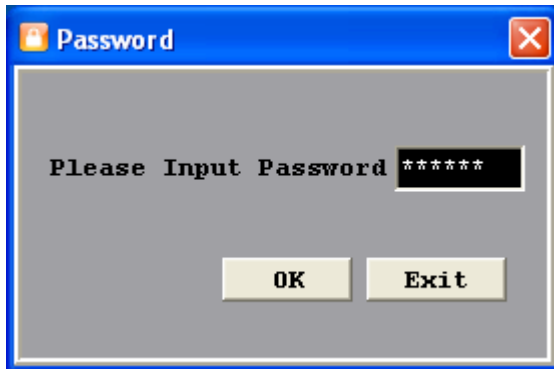
The following describes the procedures for using the VP200 programmer to accomplish the following:

1. Establish a computer hardware configuration.
2. Make sure VP200 has battery that is fully charged.
3. Turn the On/Off volume control to the OFF position.
4. Turn the function switch to position 'C'.
5. With your right or left thumb, press down firmly and hold the reset button.
6. With your other hand, turn the On/Off volume control to ON.
7. The amber and red indicators should both light and a constant loud tone should sound for three seconds.
8. Release the reset button as soon as the events in Step 7 occur.
9. Observe the position of the programming pins and insert the VP200 into the VP200 programming nest. The red indicator on the programming interface should light.
10. After programming success, need to turn the On/Off volume control to the ON position to effect the values.

---

## Starting the Programmer

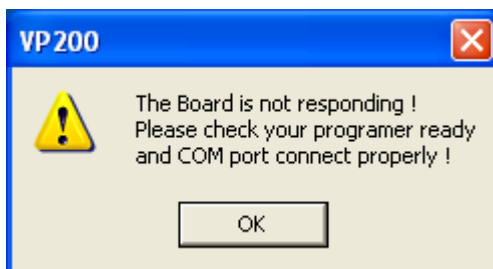
1. The application can be launched from Start → Programs → Gold Apollo → VP200 Pager Programmer. The following window appears:



2. Input your password. If key in wrong password for 3 times, the system shuts off automatically. If the password is correct, the following window appears:

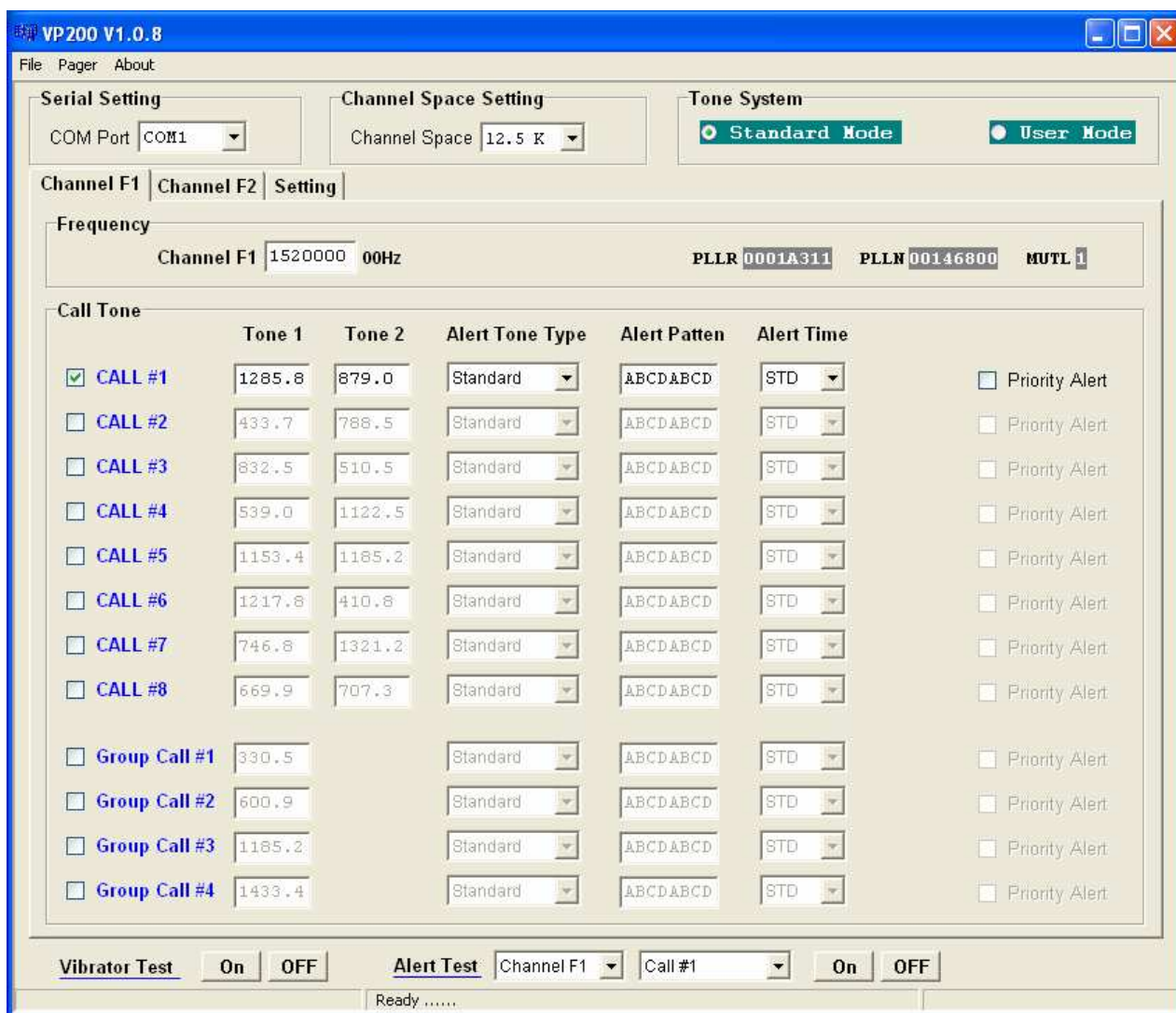


3. Now, the system examines that the VP200 programmer is well installed. If any questions, the following window appears:



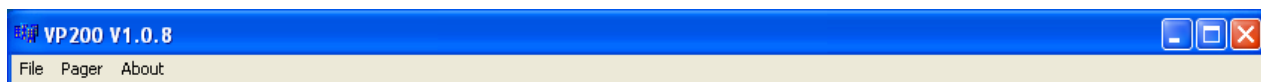
4. The system shuts off automatically, please re-check the VP200 programmer and COM port are well installed or not then, re-execute the system. If the connection with programmer is OK, the system enters the Main Menu.

## Main Menu



## Menu bar

In the menu bar, there are main menus with submenus like those conventionally used in Windows applications.

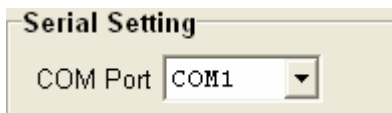


- **File | Open**  
Open a VP200 code-plug file. The file has the extension “.tbl”.
- **File | Save**  
Save the current code-plug data to a file.
- **File | Save As**  
Save the current code-plug data to a file with different filename.

- **Pager | Write**  
Write the current code-plug data to the pager.
- **Pager | Read**  
Read code-plug data from the a pager.
- **Pager | Verify**  
Verify the pager data.
- **About**  
Information about the VP200 pager programming version.

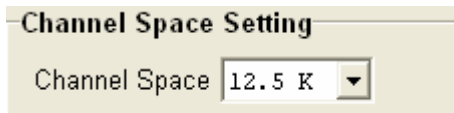
### Serial Setting

Select the communication port which is connected to your programmer kit. The system will search the available COM port in the computer and define the COM port that already connected with VP200 programmer as pre-programmed.



### Channel Space Setting

Select one of the channel spacing. The option has 12.5K, 10K, 6.25K or 2.5K.



### Tone System

Select the type of system that the address tones will be selected for. If a system other than USER is selected, then tones pertaining to the selected system are the only tones available for programming.



- **Standard Mode**  
If Standard Mode is selected, all call tones must match the tone listed in this table. If a tone frequency other than the tone frequency listed in this table is entered in the call tone field, the VP200 Pager Programmer will round this frequency to the nearest frequency in the table.

- **User Mode**

If USER is selected, then any address tone frequency can be entered if proper tone spacing is maintained and between 280.0Hz and 3500.0Hz.

### Channel

The model of VP200 is supported tow channels. Here is an example for channel F1.

Channel F1		Channel F2	Setting			
Frequency						
Channel F1	1520000	00Hz	PLL R 0001A311 PLL N 00146800 MUTL 1			
Call Tone						
	Tone 1	Tone 2	Alert Tone Type	Alert Patten	Alert Time	
<input checked="" type="checkbox"/> CALL #1	1285.8	879.0	Standard	ABCDABCD	STD	<input type="checkbox"/> Priority Alert
<input type="checkbox"/> CALL #2	433.7	788.5	Standard	ABCDABCD	STD	<input type="checkbox"/> Priority Alert
<input type="checkbox"/> CALL #3	832.5	510.5	Standard	ABCDABCD	STD	<input type="checkbox"/> Priority Alert
<input type="checkbox"/> CALL #4	539.0	1122.5	Standard	ABCDABCD	STD	<input type="checkbox"/> Priority Alert
<input type="checkbox"/> CALL #5	1153.4	1185.2	Standard	ABCDABCD	STD	<input type="checkbox"/> Priority Alert
<input type="checkbox"/> CALL #6	1217.8	410.8	Standard	ABCDABCD	STD	<input type="checkbox"/> Priority Alert
<input type="checkbox"/> CALL #7	746.8	1321.2	Standard	ABCDABCD	STD	<input type="checkbox"/> Priority Alert
<input type="checkbox"/> CALL #8	669.9	707.3	Standard	ABCDABCD	STD	<input type="checkbox"/> Priority Alert
<input type="checkbox"/> Group Call #1	330.5		Standard	ABCDABCD	STD	<input type="checkbox"/> Priority Alert
<input type="checkbox"/> Group Call #2	600.9		Standard	ABCDABCD	STD	<input type="checkbox"/> Priority Alert
<input type="checkbox"/> Group Call #3	1185.2		Standard	ABCDABCD	STD	<input type="checkbox"/> Priority Alert
<input type="checkbox"/> Group Call #4	1433.4		Standard	ABCDABCD	STD	<input type="checkbox"/> Priority Alert

➤ **Frequency**

Frequency	
Channel F1	1520000 00Hz
	PLL R 0001A311 PLL N 00146800 MUTL 1

- **Channel F1**

Enter the frequency of operation for the channel.

➤ Call Tone

Call Tone	Tone 1	Tone 2	Alert Tone Type	Alert Patten	Alert Time	
<input checked="" type="checkbox"/> CALL #1	1285.8	879.0	Standard	ABCDABCD	STD	<input type="checkbox"/> Priority Alert
<input type="checkbox"/> CALL #2	433.7	788.5	Standard	ABCDABCD	STD	<input type="checkbox"/> Priority Alert
<input type="checkbox"/> CALL #3	832.5	510.5	Standard	ABCDABCD	STD	<input type="checkbox"/> Priority Alert
<input type="checkbox"/> CALL #4	539.0	1122.5	Standard	ABCDABCD	STD	<input type="checkbox"/> Priority Alert
<input type="checkbox"/> CALL #5	1153.4	1185.2	Standard	ABCDABCD	STD	<input type="checkbox"/> Priority Alert
<input type="checkbox"/> CALL #6	1217.8	410.8	Standard	ABCDABCD	STD	<input type="checkbox"/> Priority Alert
<input type="checkbox"/> CALL #7	746.8	1321.2	Standard	ABCDABCD	STD	<input type="checkbox"/> Priority Alert
<input type="checkbox"/> CALL #8	669.9	707.3	Standard	ABCDABCD	STD	<input type="checkbox"/> Priority Alert
<input type="checkbox"/> Group Call #1	330.5		Standard	ABCDABCD	STD	<input type="checkbox"/> Priority Alert
<input type="checkbox"/> Group Call #2	600.9		Standard	ABCDABCD	STD	<input type="checkbox"/> Priority Alert
<input type="checkbox"/> Group Call #3	1185.2		Standard	ABCDABCD	STD	<input type="checkbox"/> Priority Alert
<input type="checkbox"/> Group Call #4	1433.4		Standard	ABCDABCD	STD	<input type="checkbox"/> Priority Alert

● CALL #1

If select this check box, the call address is always on.

● Tone 1/Tone 2

Make tone field entries. Entries into the tone fields are subject to previous selections of Tone System. If tone system selection is “Standard Mode”, after selecting the desired Call/Tone field and then pressing (F9), the tone tables may be displayed.

Call Tone	Tone 1	Tone 2
<input checked="" type="checkbox"/> CALL #1		879.0

	Mot 1	Mot 2	Mot 3	Mot 4	Mot 5	Mot 6	Mot A	Mot B	Mot Z	Mot 10	Mot 11	GE A'	GE B'	GE C'
1	330.5	569.1	1092.4	321.7	553.9	1122.5	358.9	371.5	346.7	1472.9	1930.2	682.5	652.5	667.5
2	349	600.9	288.5	339.6	584.8	1153.4	398.1	412.1	384.6	1513.5	1989	592.5	607.5	712.5
3	368.5	634.5	296.5	358.6	617.4	1185.2	441.6	457.1	426.6	1555.2	2043.8	757.5	787.5	772.5
4	389	669.9	304.7	378.6	651.9	1217.8	489.8	507	473.2	1598	2094.5	802.5	832.5	817.5
5	410.8	707.3	313	399.8	688.3	1251.4	543.3	562.3	524.8	1642	2155.6	847.5	877.5	862.5
6	433.7	746.8	953.7	422.1	726.8	1285.8	602.6	623.7	582.1	1687.2	2212.2	892.5	922.5	907.5
7	457.9	788.5	979.9	445.7	767.4	1321.2	668.3	691.8	645.7	1733.7	2271.7	937.5	967.5	952.5
8	483.5	832.5	1006.9	470.5	810.2	1357.6	741.3	767.4	716.1	1781.5	2334.6	547.5	517.5	532.5
9	510.5	879	1034.7	496.8	855.5	1395	822.2	851.1	794.3	1830.5	2401	727.5	562.5	577.5
10	539	928.1	1063.2	524.6	903.2	1433.4	912	944.1	881	1881	2468.2	637.5	697.5	622.5



- **Alert Tone Type**

Select one of the Alert Tone type. The options has Standard, Continuous, User defines.

- **Alert Patten**

Enter in the tones A; B; C; D in the sequence in which you would like them to be heard. A minus sign "-" creates a short pause. See the "Alert Tonality" for tones A; B; C; D.

- **Alert Time**

Select either standard (STD) or alert cycle duration variable (FIXED) in seconds. STD = Alert cycle controlled by the transmitted tone duration. FIXED = a fixed time entered by the user. (Note: A message may be missed if the alert duration is too long.)

The image shows two examples of the 'Alert Time' control. The first is a dropdown menu with 'STD' selected. The second is a dropdown menu with 'FIXED' selected, followed by a text input field containing '1.0' and a 'sec' label.

- **Priority Alert**

If select this check box, the vibrate page alerts are replaced by tone alert for call 1 only.

## Setting

### ➤ Model Options

- Privacy Enable**  
If select this check box, it can prevent the reset button from being used to monitor the channel.
- Disable Power Save**  
If select this check box, the Power Save is disable.
- Priority Max. Volume Level**  
If it is selected, the tone alert is at maximum volume regardless of the position of the control.

**FIX Alert**

If select this check box, the pager operates in the “fixed alert” mode. This means the tone alert is at maximum volume regardless of the position of the volume control. If it isn’t selected, then the alert tone and voice audio level is adjustable using the volume control.

**Enable Function Announcement**

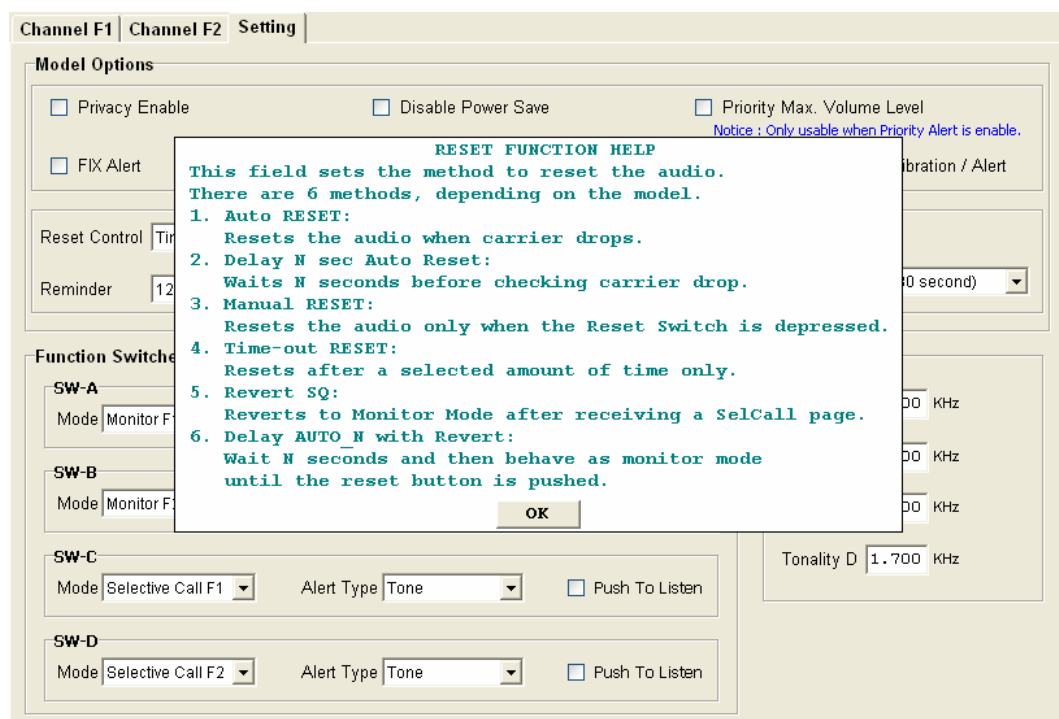
Enable or Disable the voice prompt when a pager is powered on or the function switch is turned. This feature is available with the feature of “Save voice” is enabled.

**Enable Function With Vibration / Alert**

Enable or Disable the vibration or alert prompt when a pager is powered on or the function switch is turned.

**Reset Control**

Determines how a select call pager squelches a message after receiving a page. The option has Auto Reset · Delay N sec Auto Rest · Manual RESET · Time-Out RESET · Revert SQ · Delay AUTO N with Revert. Click [Help](#) to displays “RESET FUNCTION HELP”.



**Reminder**

When “Save voice” is present, this option establishes the time with the pager to beep periodically indicating an unread message. The option has Disable · 30 Second · 60 Second · 120 Second.

**Save voice**

Enable or disable stored voice on models with this option.

**Record Section**

Select the maximum length (in seconds) of a message. This entry is available only on stored voice pagers. This option has 2 sections (120 seconds) 、 4 sections (60 seconds) 、 8 sections (30 seconds) 、 16 sections (15 seconds).

➤ **Function Switches Group**

Determines the Function Switches. Here is an example for SW-A.

The screenshot shows a window titled "Function Switches" with four sections: SW-A, SW-B, SW-C, and SW-D. Each section contains a "Mode" dropdown menu, an "Alert Type" dropdown menu, and a "Push To Listen" checkbox. SW-A has Mode: Monitor F1, Alert Type: Tone, and Push To Listen: unchecked. SW-B has Mode: Monitor F2, Alert Type: Tone, and Push To Listen: unchecked. SW-C has Mode: Selective Call F1, Alert Type: Tone, and Push To Listen: unchecked. SW-D has Mode: Selective Call F2, Alert Type: Tone, and Push To Listen: unchecked.

● **Mode**

Select one of the pager operation modes. If a pager is set to a single channel pager, only modes regarding F1 are available. The options has Monitor F1, Monitor F2, Selective Call F1, Selective Call F2, Probability Scan, Priority Scan F1 and Silent Scan.

● **Alert Type**

A pager can alert at three different ways. The option has Tone 、 Vibrate and Tone & vibrate.

● **Push To Listen**

Enable the PTL option. At this time, the Alert Type is changed to Vibrate automatically and disabled the user selection for Alert Type. This option is only available in selective call and silent scan modes.

➤ **Alert Tonality**

Each letter can have possible waking audio frequencies from 150 cycles per second to 5.49 kHz. The system rounds entered frequency off depending upon the possibilities of the internal frequency divider on or.

Alert Tonality	
Tonality A	<input type="text" value="0.200"/> KHz
Tonality B	<input type="text" value="0.400"/> KHz
Tonality C	<input type="text" value="0.900"/> KHz
Tonality D	<input type="text" value="1.700"/> KHz